

# OCTI™ Notation

Copyright 2000, Don Green



OCTI is a registered trademark, patent pending, all rights reserved.  
 OCTI is distributed by the Great American Trading Company. For sales information, call (800) 225-7449 or visit [www.octi.net](http://www.octi.net)

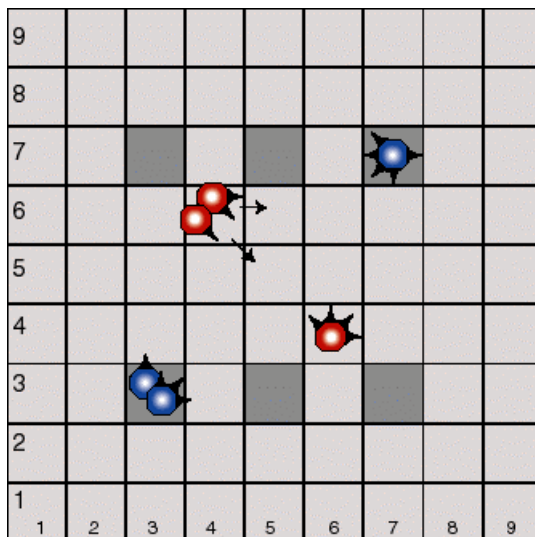
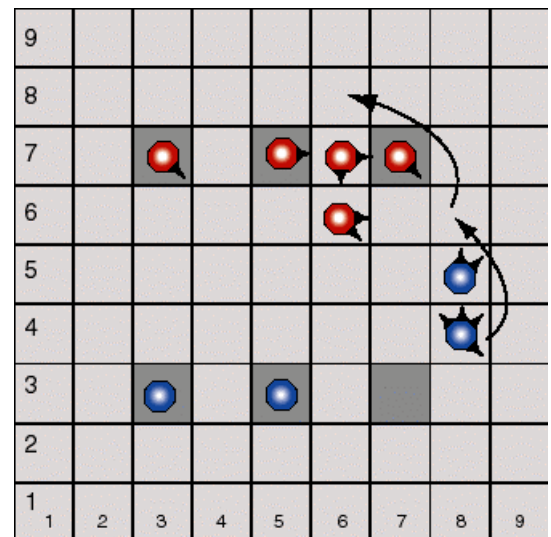
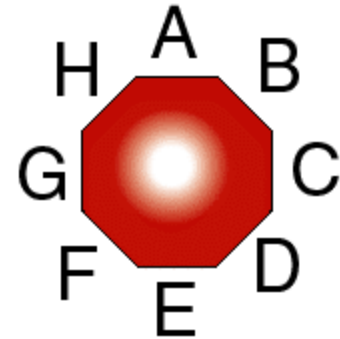
Here is a simple and intuitive notation system for OCTI.

**Squares** are designated with numbers, ranging from 11 to 99. The first digit refers to the horizontal coordinate. The second digit refers to the vertical. For example, the three lower OCTI squares are located at 33, 53, and 73.

**Prongs** are designated with letters. “A” faces north, “B” faces northeast, and so on through “H.” To add a prong to a pod, simply list the pod’s location, a plus sign (+), and the letter of the new prong. For example, 33+B places a northeast prong on the pod in square 33. (Superprongs are denoted with a “!”, e.g., 33+B!.) To **reposition a prong** so that it faces north, write 33+A-B.

To bring a new pod onto the board, simply list its new location. For example, 73.

**Moves** are indicated by listing the starting and destination squares, separated by dashes. For example, in the diagram at right, the piece at 84 moves as follows: 84-86-68. To indicate a capture, specify an “x” in the destination square immediately after the capture. In the example at right, the Blue pod could capture the piece at 77. Record this move 84-86-68x. If Blue instead wishes to capture its own pod, record 84-86x-68.



To move one or more pieces in a stack, list the moves for each pod separately. To designate each pod, list its location and prong positions. For example, the move illustrated at left would be recorded 46CD-56, 46D-55.

To comment on any particular piece, list its location and, optionally, its prongs. The Red pod on 64 could be denoted “64” or “64ABCH.” To add a prong to a pod in a stack, specify the particular pod using its full designation. For example: 33ABC+E adds a south prong to the 3-pronged pod in 33.